

How to enable SQL Server authentication

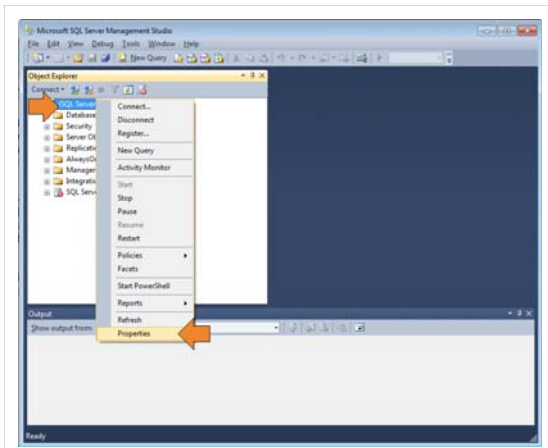
2. Enabling SQL Server Authentication through SQL Management Studio

To enable SQL Server Authentication for your instance:

1. Open SQL Server Management Studio.
2. Connect to the SQL Server instance you would like to use for Dundas BI.

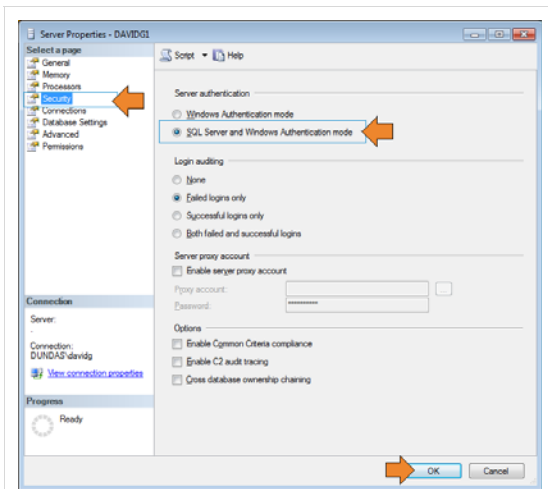


3. In the Object Explorer, right-click the server, and then click Properties.



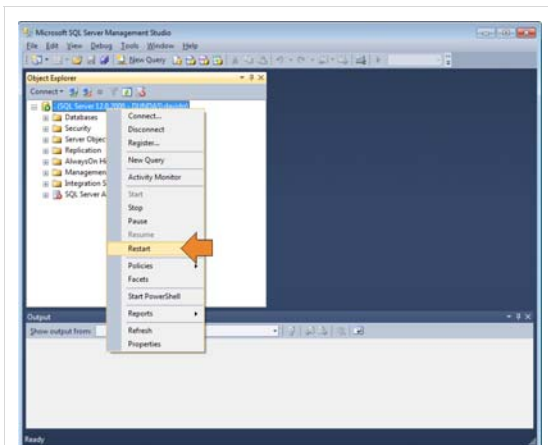
Server properties
(/support/images/dbi/docs/install
/sql/ServerAuth_SelectingServerProperties.png)

4. On the Security page, under Server authentication, select SQL Server and Windows Authentication mode, and then click OK.



Turn on SQL Server authentication mode
(/support/images/dbi/docs/install
/sql/ServerAuth_TurnOnSQLServerAuthenticationMode.png)

5. In the Object Explorer, right-click your server, and then click Restart. If the SQL Server Agent is running, it must also be restarted.



Restart SQL Server
(/support/images/dbi/docs/install
/sql/ServerAuth_RestartSQLServer.png)